

The logo features the word "DURO" in a bold, white, sans-serif font, centered within a dark blue, rounded rectangular shape that has a metallic, brushed texture.The logo consists of a white circular icon containing a stylized gear or wheel, followed by the word "YOKOTA" in a white, sans-serif font.

BONDED ABRASIVES

CUTTING
GRINDING



PLUS

STEEL & INOX - ANGLE GRINDERS - FLAT & DEPRESSED CENTRE CUT

USE ME FOR

- > Professional cutting with angle grinders
- > All carbon steel types
- > All stainless steel types
- > EN12413

FEATURES

- Layers > 2 Reinforced
- Max Speed > 80 m/s
- Material > Coated Alum Oxide - Free FE, S & CL <0.1%
- Package > Tins of 10 or Boxes of 25

PROFESSIONAL LEVEL CUTTING DISCS

FLAT CUT

TINS OF 10
SUPER THIN 1.0 MM

DIMENSIONS	SPECIFICATION	PART NO.
(4½") 115 x 1.0 x 22.23 mm	A60BF INOX DUO	PF115-22-ADMI-1.0-10P
(5") 125 x 1.0 x 22.23 mm	A60BF INOX DUO	PF125-22-ADMI-1.0-10P

Super Thin
In Tins



FLAT CUT

**SUPER THIN - BOX OF 25
1.0 TO 1.9 MM THICKNESS**

DIMENSIONS	SPECIFICATION	PART NO.
(4½") 115 x 1.0 x 22.23 mm	A60BF Inox Duo	PF115-22-ADMI-1.0
(4½") 115 x 1.6 x 22.23 mm	A46BF Inox Duo	PF115-22-ADMI-1.6
(5") 125 x 1.0 x 22.23 mm	A60BF Inox Duo	PF125-22-ADMI-1.0
(5") 125 x 1.6 x 22.23 mm	A46BF Inox Duo	PF125-22-ADMI-1.6
(9") 230 x 1.9 x 22.23 mm	A46BF Inox Duo	PF230-22-ADMI-1.9

FLAT CUT

**BOX OF 25
2.5 TO 3.0 MM THICKNESS**

DIMENSIONS	SPECIFICATION	PART NO.
(4½") 115 x 2.5 x 22.23 mm	A30BF Inox Duo	PF115-22-ADMI-2.5
(5") 125 x 2.5 x 22.23 mm	A30BF Inox Duo	PF125-22-ADMI-2.5
(9") 230 x 3.0 x 22.23 mm	A30BF Inox Duo	PF230-22-ADMI-3.0

DEPRESSED CENTRE CUT

**BOX OF 25
2.5 TO 3.0 MM THICKNESS**

DIMENSIONS	SPECIFICATION	PART NO.
(4½") 115 x 2.5 x 22.23 mm	A30BF Inox Duo	PD115-22-ADMI-2.5
(5") 125 x 2.5 x 22.23 mm	A30BF Inox Duo	PD125-22-ADMI-2.5
(9") 230 x 3.0 x 22.23 mm	A30BF Inox Duo	PD230-22-ADMI-3.0



STEEL & INOX - ANGLE GRINDERS - FLAT & DEPRESSED CENTRE CUT



USE ME FOR

- > Cutting with angle grinders
 - > All carbon steel types
 - > All stainless steel types
- > EN12413


FEATURES

- Layers > 2 Reinforced
- Max Speed > 80 m/s
- Material > Coated Alum Oxide - Free FE, S & CL <0.1%
- Package > Tins of 10 or Boxes of 25

EVERY DAY DEAL ON SUPER THINS IN TINS' BUY 10 GET ANOTHER 5 FREE

*APPLIES TO DURO STANDARD ONLY

FLAT CUT




TINS OF 10
SUPER THIN 1.0MM

DIMENSIONS	SPECIFICATION	PART NO.
(4 1/2") 115 x 1.0 x 22.23 mm	A60BF INOX DUO	F115-22-ADMI-1.0-10P
(5") 125 x 1.0 x 22.23 mm	A60BF INOX DUO	F125-22-ADMI-1.0-10P

Super Thin
In Tins




FLAT CUT



**SUPER THIN - BOX OF 25
1.0 TO 1.9 MM THICKNESS**

DIMENSIONS	SPECIFICATION	PART NO.
(4") 100 x 1.0 x 16.00 mm	A60BF Inox Duo	F100-16-ADMI-1.0
(4") 100 x 1.6 x 16.00 mm	A46BF Inox Duo	F100-16-ADMI-1.6
(4 1/2") 115 x 1.0 x 22.23 mm	A60BF Inox Duo	F115-22-ADMI-1.0
(4 1/2") 115 x 1.6 x 22.23 mm	A46BF Inox Duo	F115-22-ADMI-1.6
(5") 125 x 1.0 x 22.23 mm	A60BF Inox Duo	F125-22-ADMI-1.0
(5") 125 x 1.6 x 22.23 mm	A46BF Inox Duo	F125-22-ADMI-1.6
(9") 230 x 1.9 x 22.23 mm	A46BF Inox Duo	F230-22-ADMI-1.9

FLAT CUT



**BOX OF 25
2.5 TO 3.0 MM THICKNESS**

DIMENSIONS	SPECIFICATION	PART NO.
(4") 100 x 2.5 x 16.00 mm	A30BF Inox Duo	F100-16-ADMI-2.5
(4 1/2") 115 x 2.5 x 22.23 mm	A30BF Inox Duo	F115-22-ADMI-2.5
(5") 125 x 2.5 x 22.23 mm	A30BF Inox Duo	F125-22-ADMI-2.5
(7") 180 x 3.0 x 22.23 mm	A30BF Inox Duo	F180-22-ADMI-3.0
(9") 230 x 3.0 x 22.23 mm	A30BF Inox Duo	F230-22-ADMI-3.0

DEPRESSED CENTRE CUT



**BOX OF 25
2.5 TO 3.0 MM THICKNESS**

DIMENSIONS	SPECIFICATION	PART NO.
(4") 100 x 2.5 x 16.00 mm	A30BF Inox Duo	D100-16-ADMI-2.5
(4 1/2") 115 x 2.5 x 22.23 mm	A30BF Inox Duo	D115-22-ADMI-2.5
(5") 125 x 2.5 x 22.23 mm	A30BF Inox Duo	D125-22-ADMI-2.5
(7") 180 x 3.0 x 22.23 mm	A30BF Inox Duo	D180-22-ADMI-3.0
(9") 230 x 3.0 x 22.23 mm	A30BF Inox Duo	D230-22-ADMI-3.0





STEEL CUTTING - FLAT CUT - DISC CUTTERS



USE ME FOR

- > Cutting with 12 & 14" hand held disc cutters
- > All mild steel types
- > All carbon steel types
- > EN12413

FEATURES

- Type > Flat - Cut
- Layers > 2 Reinforced on 3.5 mm, 3 on 4.0 mm
- Max Speed > 80 m/s & 100 m/s
- Material > Coated Aluminium Oxide
- Package > Box of 10

FEATURES

- Type > Flat - Cut For Rail
- Layers > 3 Reinforced
- Max Speed > 100 m/s
- Material > Coated Alum Oxide
- Package > Box of 10

FLAT CUT

BOX OF 10
3.5 & 4.0 MM THICKNESS

FLAT CUT FOR RAIL

BOX OF 10
4.0 MM THICKNESS

DIMENSIONS	SPEC	PART NO.
(12") 300 x 3.5 x 20.00 mm	A30BF	F300-20-ADM-3.5
(12") 300 x 3.5 x 22.23 mm	A30BF	F300-22-ADM-3.5
(12") 300 x 3.5 x 20.00 mm	A30BF	F300-20-ADM-3.5-100MS
(14") 350 x 4.0 x 20.00 mm	A30BF	F350-20-ADM-4.0

DIMENSIONS	SPEC	PART NO.
(14") 350 x 4.0 x 25.40 mm	A30BF	F350-25-ADM-4.0-RAIL



STEEL & INOX CUTTING - FLAT CUT - CHOP SAWS



USE ME FOR

- > Cutting with low powered fixed cut off machines
- > All mild carbon steel types
- > All stainless steel types
- > EN12413

FEATURES

- Type > Flat - Cut
- Layers > 2 Reinforced
- Max Speed > 80 m/s
- Material > Coated Alum Oxide - Free FE, S & CL <0.1%
- Package > Box of 10

FLAT CUT

BOX OF 10
2.5 & 2.8 MM THICKNESS

PF350-25-ADM1-2.8
Is Professional Level Performance

DIMENSIONS	SPECIFICATION	PART NO.
(14") 350 x 2.8 x 25.40 mm	A46BF Inox Duo	PF350-25-ADM1-2.8
DIMENSIONS	SPECIFICATION	PART NO.
(12") 300 x 2.5 x 25.40 mm	A46BF Inox Duo	F300-25-ADM1-2.5
(14") 350 x 2.8 x 25.40 mm	A46BF Inox Duo	F350-25-ADM1-2.8





PLUS

STEEL & INOX & STONE CUTTING - FLAT CUT - ANGLE GRINDERS



USE ME FOR

- > Professional cutting with angle grinders
- > All carbon steel types
- > All stainless steel types
- > All stone types >Plastics
- > EN12413

FEATURES

- Type > Flat - Cut
- Layers > 2 Reinforced
- Max Speed > 80 m/s
- Material > Coated SiC - Free FE, S & CL <0.1%
- Package > Box of 25

HYBRID PROFESSIONAL LEVEL CUTTING DISCS



DIMENSIONS	SPECIFICATION	PART NO.
(4½") 115 x 1.6 x 22.23 mm	C36BF Hybrid	PF115-22-H-1.6
(5") 125 x 1.6 x 22.23 mm	C36BF Hybrid	PF125-22-H-1.6
(9") 230 x 1.9 x 22.23 mm	C36BF Hybrid	PF230-22-H-1.9

STANDARD

STONE CUTTING - FLAT CUT - ANGLE GRINDERS & DISC CUTTERS

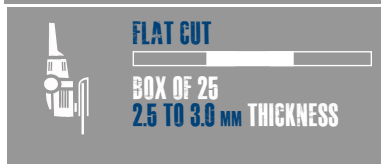


USE ME FOR

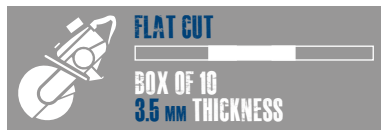
- > Cutting with angle grinders & hand held disc cutters
- > All masonry types
- > All concrete types
- > EN12413

FEATURES

- Type > Flat - Cut
- Layers > 2 Reinforced
- Max Speed > 80 m/s
- Material > Silicon Carbide (SiC)
- Package > Box of 25 (Box of 10 - 300 mm)



DIMENSIONS	SPECIFICATION	PART NO.
(4") 100 x 2.5 x 16.00 mm	C30BF	F100-16-ADS-2.5
(4½") 115 x 2.5 x 22.23 mm	C30BF	F115-22-ADS-2.5
(5") 125 x 2.5 x 22.23 mm	C30BF	F125-22-ADS-2.5
(7") 180 x 3.0 x 22.23 mm	C30BF	F180-22-ADS-3.0
(9") 230 x 3.0 x 22.23 mm	C30BF	F230-22-ADS-3.0



DIMENSIONS	SPECIFICATION	PART NO.
(12") 300 x 3.5 x 20.00 mm	C30BF	F300-20-ADS-3.5
(12") 300 x 3.5 x 22.23 mm	C30BF	F300-22-ADS-3.5



PLUS

STEEL & INOX - ANGLE GRINDERS - DEPRESSED CENTRE GRINDING

USE ME FOR

- > Professional level grinding with angle grinders
- > All carbon steel types
- > All stainless steel types

> EN12413

FEATURES

- Type > Depressed Centre - Grind
- Layers > 3 Reinforced
- Max Speed > 80 m/s
- Material > Coated Alum Oxide - Free FE, S & CL <0.1%
- Package > Boxes of 10

PROFESSIONAL LEVEL GRINDING DISCS



DIMENSIONS	SPECIFICATION	PART NO.
(4 1/2") 115 x 6.0 x 22.23 mm	A30BF Inox Duo	PD115-22-ADMI-6.0
(5") 125 x 6.0 x 22.23 mm	A30BF Inox Duo	PD125-22-ADMI-6.0
(9") 230 x 6.0 x 22.23 mm	A30BF Inox Duo	PD230-22-ADMI-6.0



STANDARD

STEEL & INOX - ANGLE GRINDERS - DEPRESSED CENTRE GRINDING

USE ME FOR

- > Grinding with angle grinders
- > All carbon steel types
- > All stainless steel types

> EN12413

FEATURES

- Type > Depressed Centre - Grind
- Layers > 3 Reinforced
- Max Speed > 80 m/s
- Material > Coated Alum Oxide - Free FE, S & CL <0.1%
- Package > Boxes of 10



DIMENSIONS	SPECIFICATION	PART NO.
(4") 100 x 6.0 x 16.00 mm	A30BF Inox Duo	D100-16-ADMI-6.0
(4 1/2") 115 x 6.0 x 22.23 mm	A30BF Inox Duo	D115-22-ADMI-6.0
(5") 125 x 6.0 x 22.23 mm	A30BF Inox Duo	D125-22-ADMI-6.0
(7") 180 x 6.0 x 22.23 mm	A30BF Inox Duo	D180-22-ADMI-6.0
(9") 230 x 6.0 x 22.23 mm	A30BF Inox Duo	D230-22-ADMI-6.0



STONE GRINDING - ANGLE GRINDERS - DEPRESSED CENTRE GRINDING



USE ME FOR

- > Grinding with angle grinders
- > All masonry types
- > All concrete types

FEATURES

- Type > Depressed Centre - Grind
- Layers > 3 Reinforced
- Max Speed > 80 m/s
- Material > Silicon carbide
- Package > Boxes of 10



DEPRESSED CENTRE GRIND

BOX OF 10
6.0 mm THICKNESS

DIMENSIONS	SPECIFICATION	PART NO.
(4") 100 x 6.0 x 16.00 mm	C30BF	D100-16-ADS-6.0
(4½") 115 x 6.0 x 22.23 mm	C30BF	D115-22-ADS-6.0
(5") 125 x 6.0 x 22.23 mm	C30BF	D125-22-ADS-6.0

TYPES OF ABRASIVES



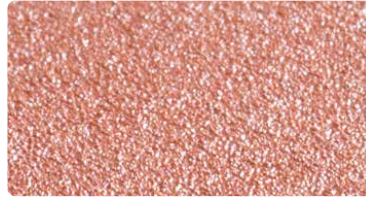
BONDED ABRASIVES

- Thousands of abrasive grains bonded together to form a single cutting tool
- Cuts & grinds material away when it comes in contact with target surface
- Material being worked on fractures surface of the grains and wears the bond exposing fresh grains in the process
- Wheel is slowly worn away as more and more grains are exposed & then released during the cutting process



COATED ABRASIVES

- Solid backing with single layer of abrasive grain bonded to its surface
- Grain cuts & grinds the target material when it comes in contact with it
- Grains fracture during cutting process to form new cutting points. This extends the life of the abrasive
- Grains will be fractured to the point where they are no longer exposed above the bond. It can no longer effectively cut/grind and needs replacing



TYPES OF ABRASIVE GRAIN USED IN DURO ABRASIVES



ALUMINIUM OXIDE

Grain that is tough and durable
Used in bonded abrasives for cutting, grinding and finishing of metal
Used in coated abrasives for cutting, grinding and finishing metal, wood and coatings

ZIRCONIA

Grain that is tough and durable with a fine crystal structure
Used in bonded abrasives for rugged stock removal of metal
Used in coated abrasives for rugged stock removal of metal and wood

SILICON CARBIDE

Grain that is very hard and brittle
Used in bonded abrasives for cutting, grinding and finishing of concrete and very hard / very soft metals
Used in coated abrasives for very fine finishing of metals and coatings

CERAMIC

Grain that is very tough, pure and durable with uniform quality
Used in coated abrasives for exceptional durability and high stock removal without excessive heat generation in hard steels such as stainless. (Used in DURO ceramic flap discs)

ABRASIVE GRADE EXPLANATION

TYPE OF GRAIN:

A - Aluminium Oxide
C - Silicon Carbide
Z - Zirconia

STRENGTH OF BOND:

BF for example indicates a reinforced bond.

ABRASIVES TRAINING

All operators using abrasive cut off discs or similar abrasive products on any type of saw must have received appropriate training. This is a legal requirement.

A 60 BF

GRIT SIZE:

The higher the number, the finer the grade of grit.